

ELECTRICAL SYMBOLS table with columns for Line Types and Symbols, Tick Marks, Equipment, and Annotations.

ELECTRICAL ABBREVIATIONS table listing various electrical components and their corresponding abbreviations.

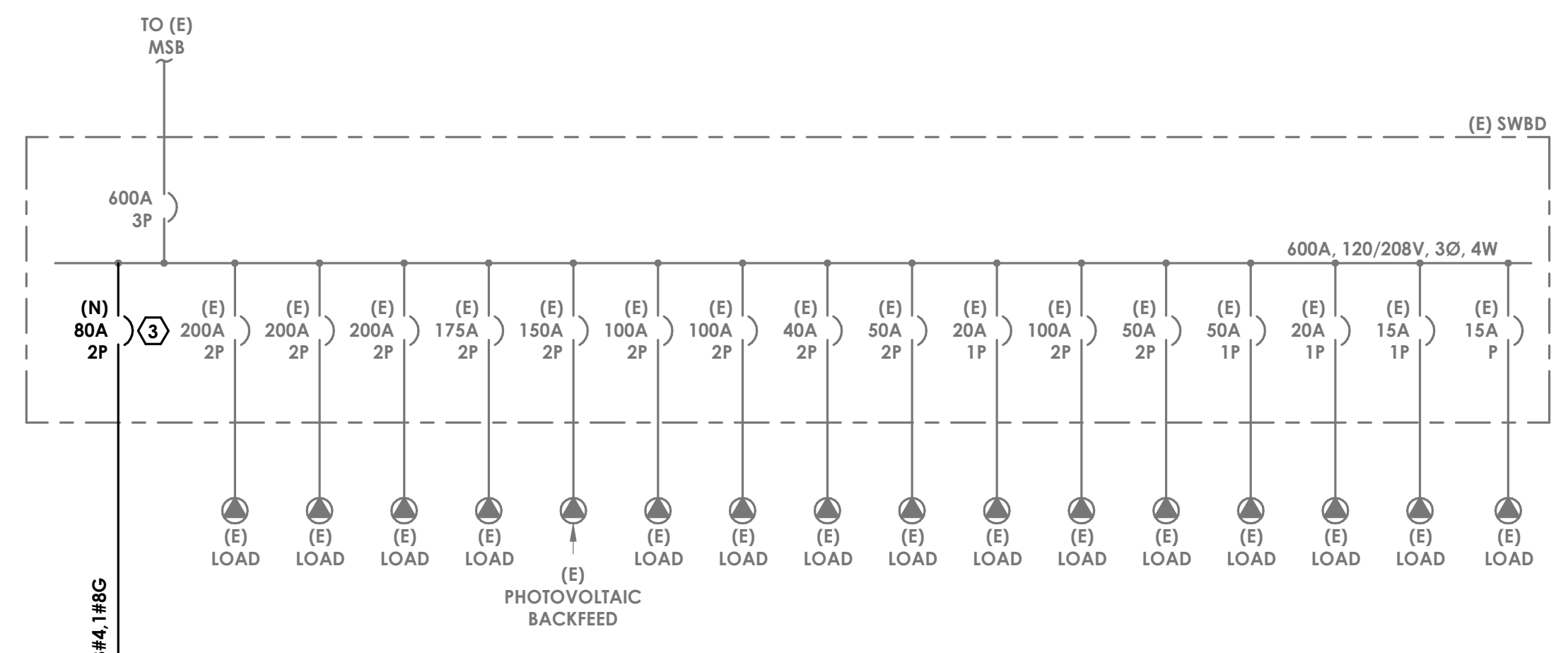
ELECTRICAL SPECIFICATIONS PART 1 - GENERAL and PART 2 - PRODUCTS, detailing requirements for lighting, equipment, and materials.

ELECTRICAL SPECIFICATIONS PART 3 - EXECUTION, detailing requirements for installation, testing, and commissioning.

ELECTRICAL SPECIFICATIONS PART 3.13 CONDUCTORS and PART 3.14 GROUNDING, detailing requirements for conductor types, sizes, and grounding methods.

MFP Component Anchorage Note, Piping, Ductwork, and Electrical Distribution System Bracing Note, and Mechanical Piping (MP), Mechanical Ducts (MD), Plumbing Piping (PP), Electrical Distribution Systems (E) details.

(N) BRANCH PANEL A NEMA 3R table showing panel configuration, load names, trip values, and bus ratings.



KEYNOTES: 1. PROVIDE AND INSTALL NEW BREAKER SHOWN OF THE SAME TYPE AND RATING AS EXISTING.

GENERAL NOTES: 1. DO ALL WORK AND INSTALL PRODUCTS IN ACCORDANCE APPLICABLE NECA REQUIREMENTS, APPLICABLE STATE LAWS, LOCAL LAWS, CODES AND ORDINANCES.

BC|A architecture planning interiors logo and address information.

PACE ENGINEERING logo and address information.

ARCHITECT and ENGINEER stamps for No. C 30345 and No. E 017968.

GENERAL NOTES table with 4 items detailing drawing requirements and copyright information.

NO. REMARKS DATE table for tracking revisions.

DRIVING STATUS checkboxes for DSA SUBMITTAL, DSA BACK CHECK, BIDDING, and CONSTRUCTION.

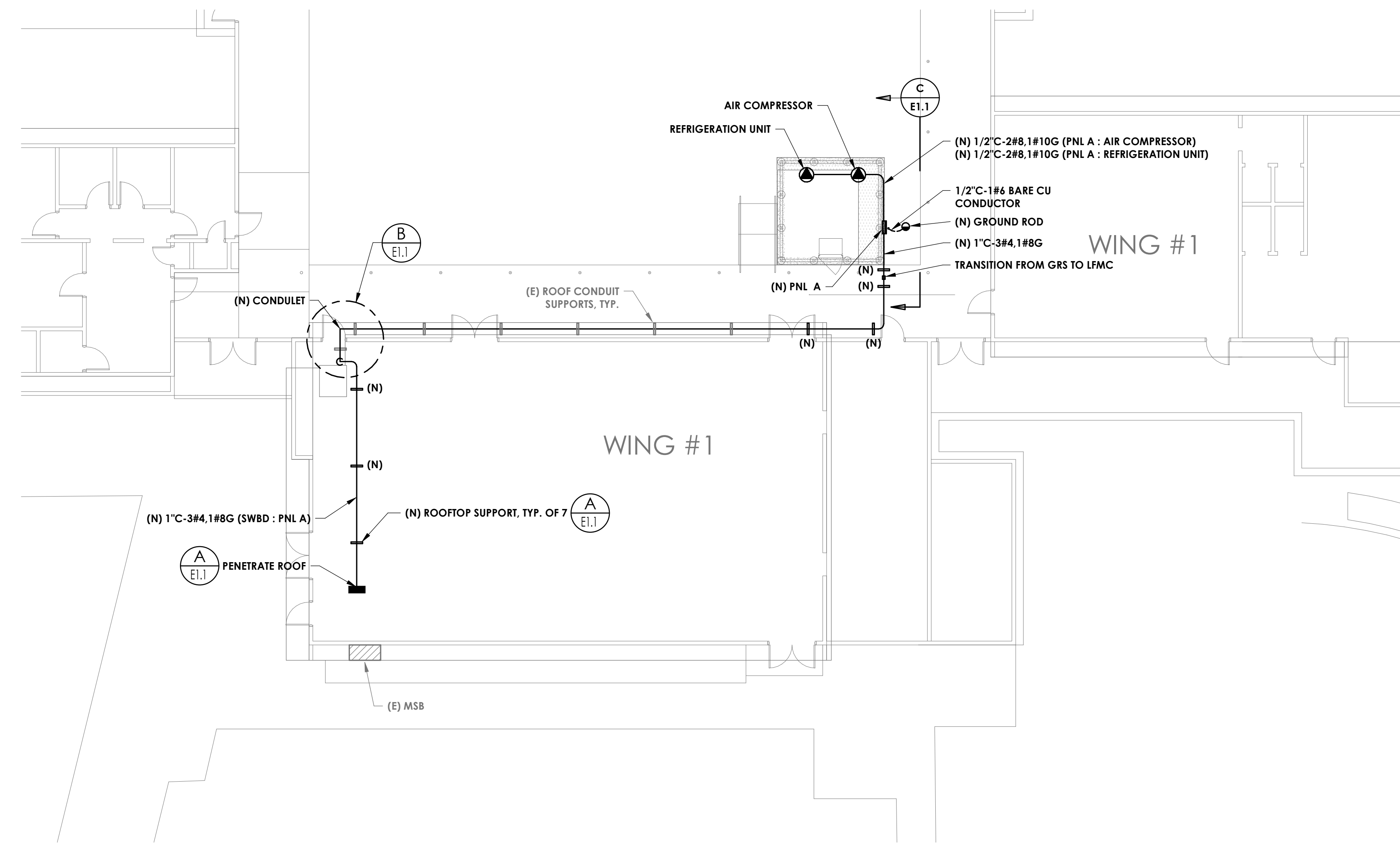
KEY PLAN

FORTUNA ELEMENTARY SCHOOL DISTRICT, 500 9th STREET, FORTUNA, CA 95540

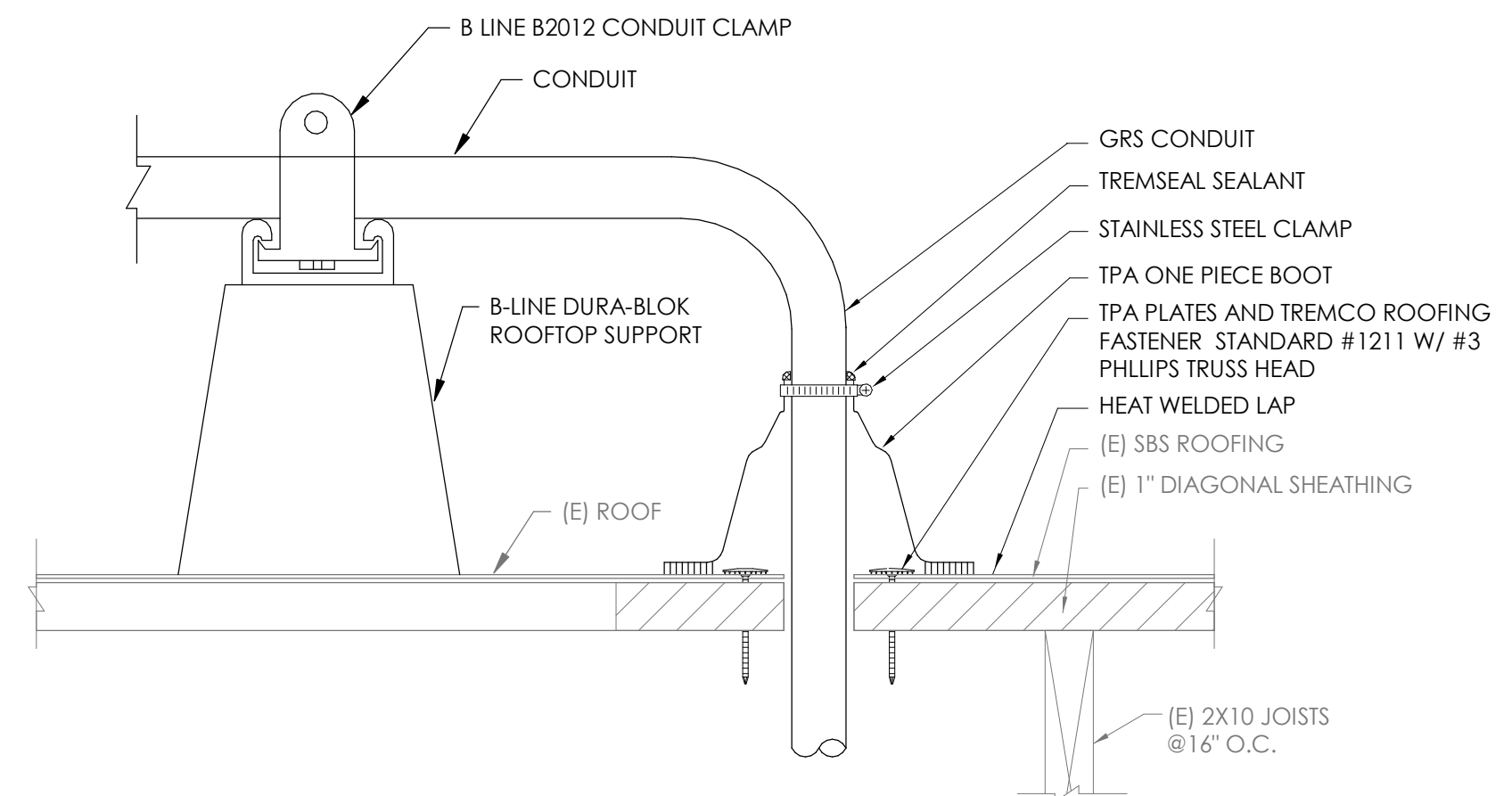
PHASE 1 WALK-IN FREEZER REPLACEMENT SOUTH FORTUNA ELEMENTARY SCHOOL 2089 NEWBURG ROAD FORTUNA, CA 95540

ELECTRICAL SPECIFICATIONS

Date 04.02.20, Drawing Number, Scale AS NOTED, Project Number 19008, and drawing title E0.0.

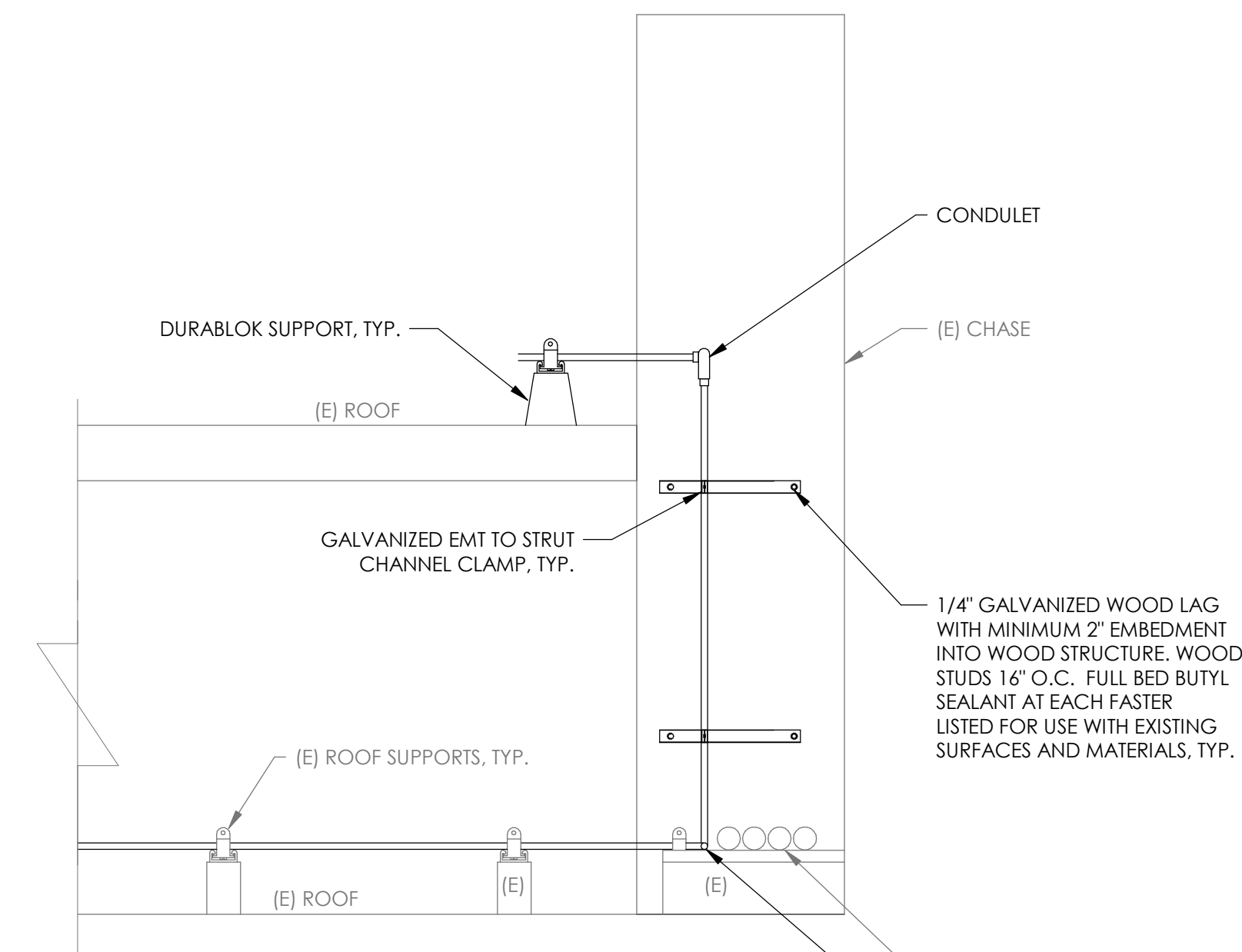


**ELECTRICAL SITE PLAN** 1  
1" = 10'-0" E1.1



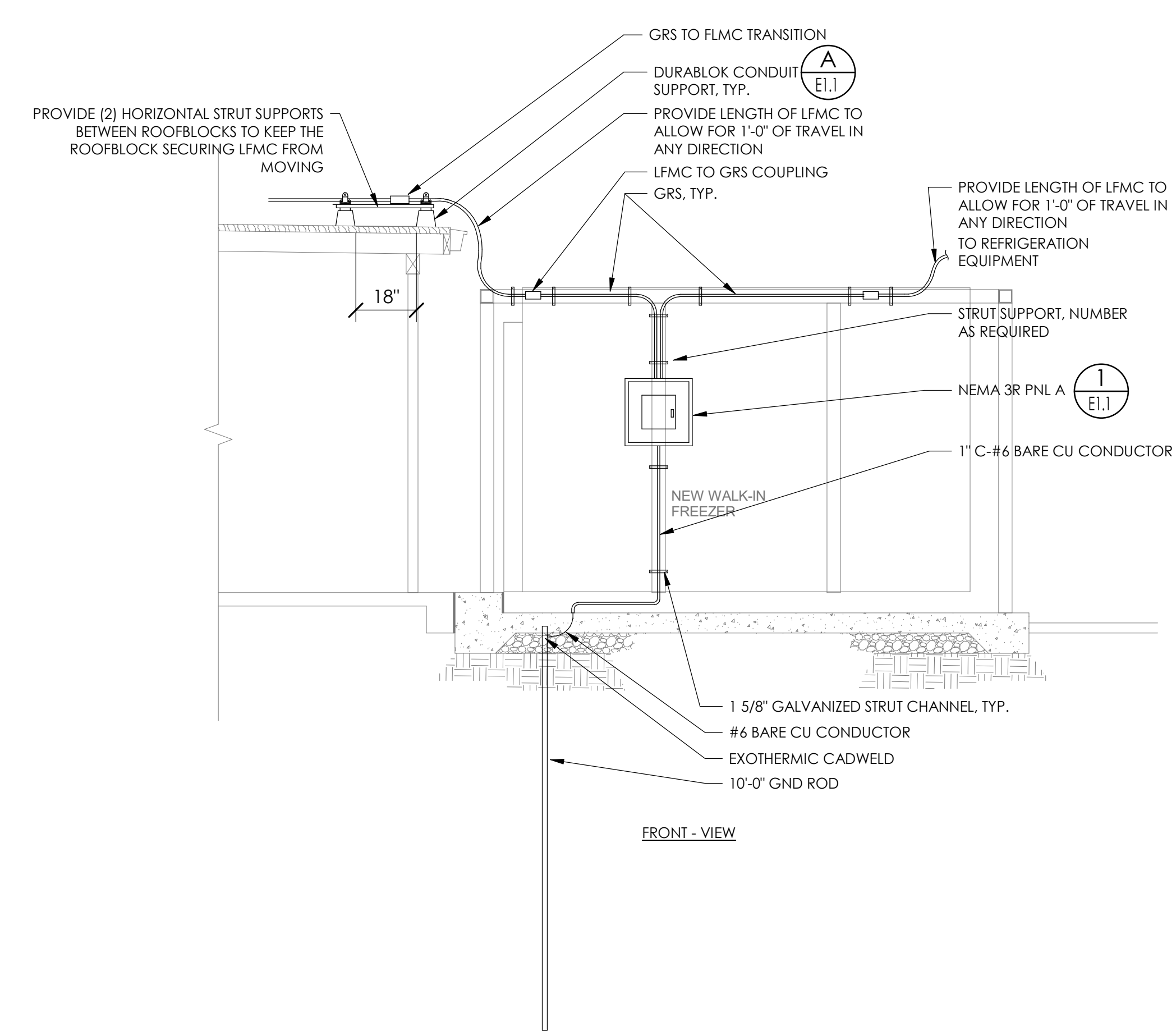
**NOTES:**  
 1. ALL MATERIALS ARE NEW UNLESS NOTED OTHERWISE.  
 2. DO NOT CUT PREFABRICATED BOOT. IT MUST BE FILLED OVER CONDUIT.  
 3. PREFABRICATED BOOTS ARE AVAILABLE IN SMALL & LARGE SIZES, AND MUST BE USED WHENEVER POSSIBLE TO FLASH PIPES 1" TO 8" IN DIAMETER.

**ROOFTOP CONDUIT PENETRATION DETAIL** A  
NTS E1.1

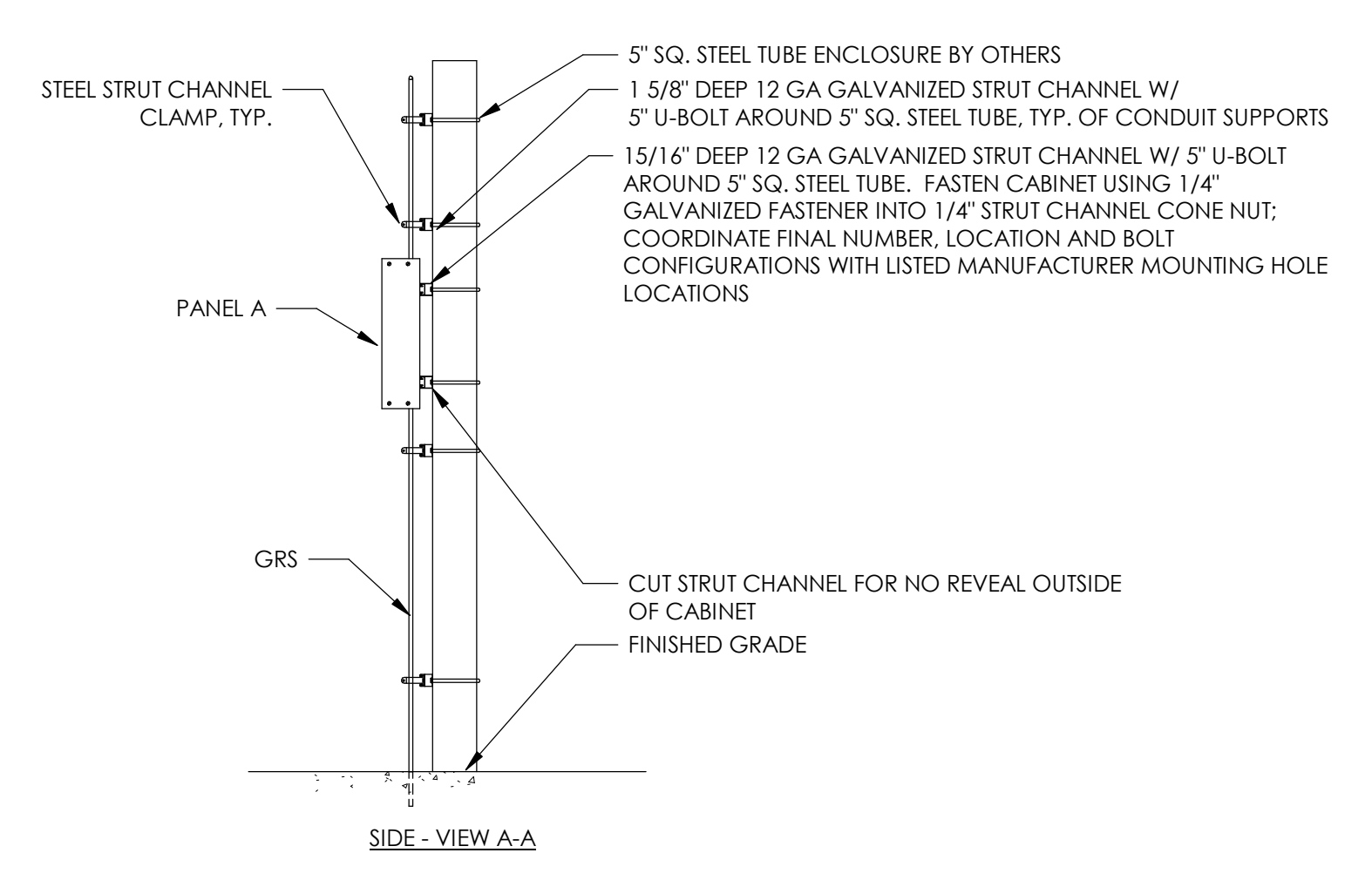


**NOTES:**  
 ALL MATERIALS ARE NEW UNLESS NOTED OTHERWISE

**RACEWAY ROUTING DETAIL** B  
NTS E1.1



**PANEL AND RACEWAY DETAIL** C  
NTS E1.1

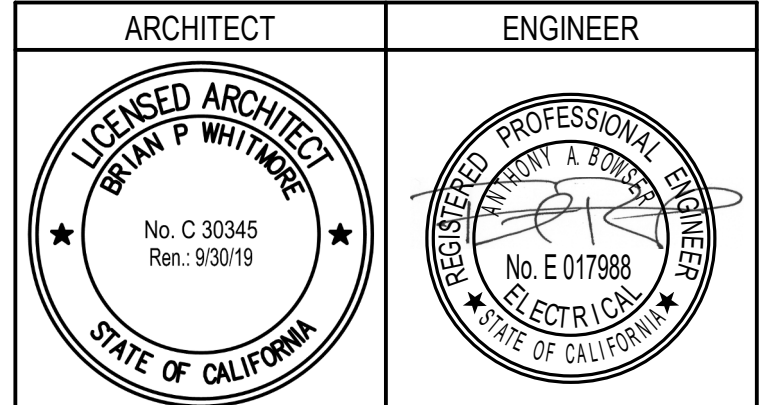


APPROVED  
 DIV. OF THE STATE ARCHITECT  
 APP. 01-118296 INC.  
 REVIEWED FOR  
 SS [ ] FLS [ ] ACS [ ]  
 DATE: 05/01/2020

**BCA**  
 architecture  
 planning  
 interiors

BCA Architects  
 111 N. Market Street, Suite 710  
 San Jose, California 95113  
 [T] 408.588.3800  
 www.BCAarchitects.com

**PACE**  
 ENGINEERING  
 REDWOOD, CALIFORNIA

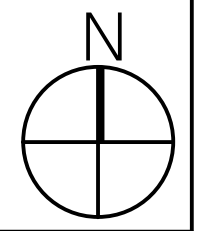


**GENERAL NOTES**  
 1. This sheet is part of a set and is not to be used alone.  
 2. This sheet is not to be used for construction unless the architect's stamp and signature appear on the drawings and the status box indicates drawings have been released for construction.  
 3. These plans and prints thereof, as instruments of service, are owned by the architect and are for use on this project only. Reproduction and/or distribution without the prior written consent of the architect is forbidden.  
 4. Copyright Burton Clifford Associates, 2019

NO.	REMARKS	DATE

DRAWING STATUS	DATE
<input type="radio"/> DSA SUBMITTAL	
<input type="radio"/> DSA BACK CHECK	
<input type="radio"/> DSA SUBMITTAL	
<input type="radio"/> DSA BACK CHECK	
<input type="radio"/> BIDDING	
<input type="radio"/> CONSTRUCTION	

**KEY PLAN**



**FORTUNA ELEMENTARY SCHOOL DISTRICT,**  
 500 9th STREET,  
 FORTUNA, CA 95540

**PHASE 1**

**WALK-IN FREEZER REPLACEMENT**  
 SOUTH FORTUNA ELEMENTARY SCHOOL  
 2089 NEWBURG ROAD  
 FORTUNA, CA 95540

**ELECTRICAL SITE PLAN**

Date	Drawing Number
04.02.20	E1.1
Scale	AS NOTED
Project Number	19008

2322.12 SOUTH FORTUNA FREEZER\_C20\_detached.rvt 4/7/2020 5:00:16 PM