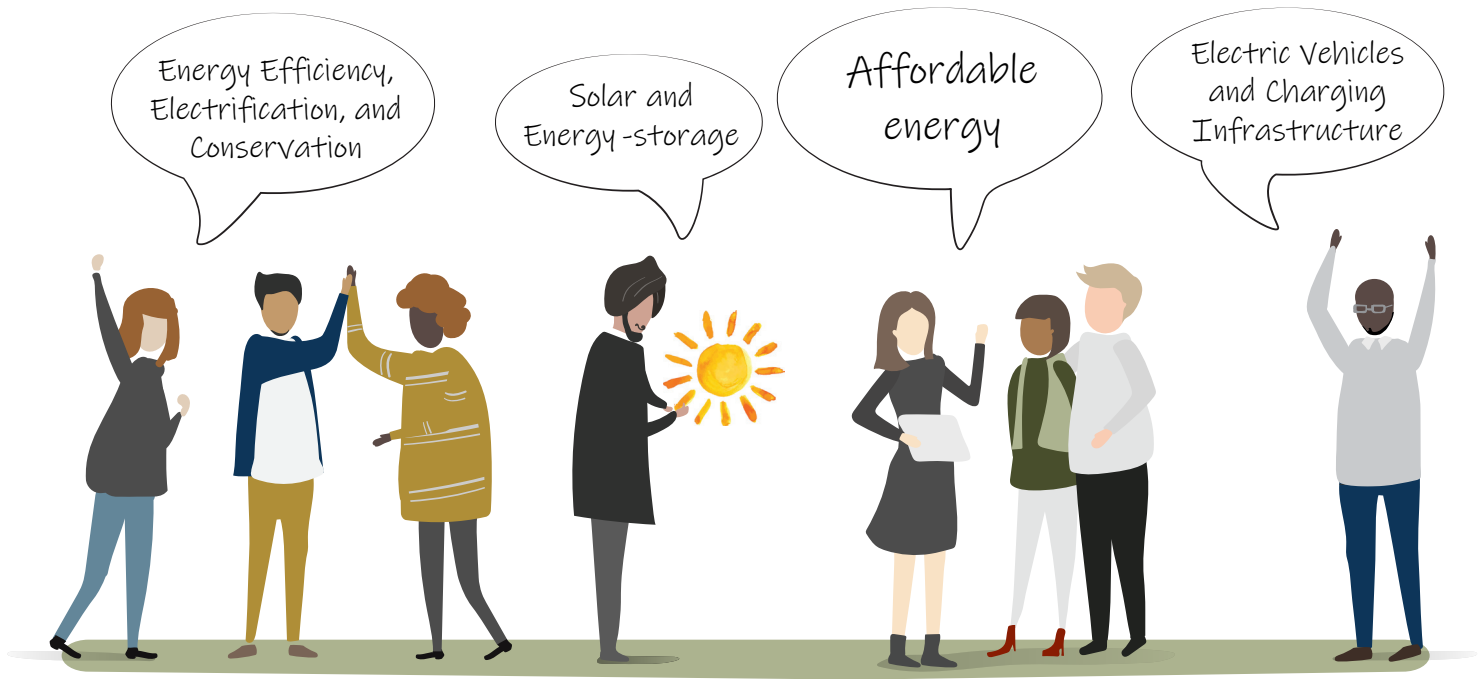


CITIZEN SOURCING

for Community Choice Energy Programs



The Redwood Coast Energy Authority implements a variety of energy-related programs and projects of behalf of Humboldt County ratepayers. In May of 2017 we launched Community Choice Energy (CCE). CCE prioritizes the use of local renewable energy, economic development, energy independence, customer rate-savings, choice and community programs.

RCEA is now inviting the community to join us in identifying new and/or expanded programs or projects. Anyone with a compatible idea or vision is welcome to respond, prior experience with energy planning is not required. Programs or projects must provide a direct benefit to Humboldt County Community Choice Energy ratepayers and align with RCEA's prioritized program areas:

- Electric Vehicles and Charging Infrastructure
- Energy Efficiency, Electrification, and Conservation
- Distributed Solar Power and Energy Storage Systems



REDWOOD COAST
Energy Authority

633 3rd Street, Eureka, CA 95501 | (707) 269-1700 ext: 352

THE KIND OF IDEAS WE ARE LOOKING FOR:

RCEA's goal is to source programs and project ideas from our community that will support RCEA's 2030 vision. RCEA expects to see a wide range of ideas, from neighborhood innovations to county-wide solutions.

Responses should be limited to two pages, addressing all required sections as noted below, plus a maximum of three pages of supplementary material. Page count excludes your cover page. Your idea should be completely self-contained, with the intent that a reviewer can read and understand it in 15 minutes or less. As appropriate, RCEA will request additional information to more fully evaluate an idea.

WHAT YOU WILL NEED TO DO:

Each response must include the following sections. [A template](#) is provided for your convenience.

Cover Page

Include no less than the following:

- RCEA reference number CS 19-001
- Clearly indicate company/individual name, address, and primary contact's information (mailing address, phone numbers and email)

Section A: Program Description

Briefly describe the program concept and vision, how you would define success, and the amount of time and estimated budget needed to fully realize that vision.

Section B: Problem Statement

Please discuss why this program is needed in our community and how it will address that need.

Section C: Scope

Describe the scope of the program. Please also include customer sector (e.g. residential, California Alternate Rates for Energy Program (CARE)-eligible, business), target participants and/or beneficiaries.

HOW TO RESPOND:

RCEA will be accepting responses on an ongoing basis. Projects to be considered for the first review must be submitted by close of business on **March 14, 2019**.

Responses must be submitted each year before **October 31st** to be considered for subsequent reviews. Both hard copies and emails will be accepted.

THE SELECTION AND EVALUATION PROCESS:

RCEA's Community Advisory Committee's Program Subcommittee will work with RCEA staff to evaluate responses. This committee will be referred to as the "Review Panel." The Review Panel will evaluate and score each response.

The following criteria will be scored on a scale of 0 to 5 with a five being the highest score for each category. The weight that will be applied is noted before each criteria below. There is a maximum of 100 points. If a program does not align with RCEA's prioritized program areas or is duplicative to existing programs it may be immediately disqualified.

The Review Panel score will guide selection but may not be the sole selection criterion used.

Weight/Scoring Criteria

- **25**—Alignment to or support of, RCEA's mission, purpose, and Comprehensive Action Plan for Energy (CAPE) 2030 vision statement
- **15**—Leverages existing federal, state and/or local energy programs
- **30**—Program feasibility
- **20**—Community benefit and equitability
- **10**—Innovation and creativity

Total Points Possible: 100

Please see "Additional Terms" for other applicable items pertinent to this process.

WHERE TO SEND RESPONSES AND QUESTIONS:

Responses should be submitted by email or by hard copy and will be taken on an ongoing basis

SUBMIT TO:

citizensourcing@redwoodenergy.org **OR** Redwood Coast Energy Authority
633 3rd Street, Eureka, CA 95501

SEND QUESTIONS TO:

citizensourcing@redwoodenergy.org or call (707) 269-1700 ext: 352

HOW YOU WILL BE NOTIFIED:

RCEA will notify all respondents regarding their proposal via email and in writing.



ADDITIONAL TERMS:

- Submissions in response to this request are an acknowledgment and an agreement to all terms and conditions as presented within this document.
- All submissions become the property of RCEA and are public records subject to public review.
- Respondents shall not discriminate on any basis protected by law, including, for example, race, color, national origin, religion, age, ancestry, medical condition, disability, gender, or gender identity.
- Costs of preparing a response are solely the responsibility of the respondent.
- Advancement of a response does not obligate RCEA to award a contract, to defray any costs incurred in the preparation of a response pursuant to this request, or to procure or contract for work.
- Incomplete submittals or submittals with incorrect information may be cause for immediate disqualification.
- RCEA reserves the right to reject any and all submittals and to waive any irregularities or informalities in the submittals.
- RCEA reserves the right to request additional information or clarification during the evaluation process.
- RCEA reserves the right to remove or disqualify from consideration any submissions.



RCEA is a local government joint powers agency whose members include the County of Humboldt, the Cities of Arcata, Blue Lake, Eureka, Ferndale, Fortuna, Rio Dell, and Trinidad, and the Humboldt Bay Municipal Water District. RCEA's purpose is to develop and implement sustainable energy initiatives that reduce energy demand, increase energy efficiency, and advance the use of clean, efficient and renewable resources available in the region.



REDWOOD COAST
EnergyAuthority