

ADDENDUM TO INVITATION FOR BIDS
Southern Humboldt Unified School District
Proposition 39
LED Lighting Upgrade Project
Bid No. 17-006

Addendum #1
March 22, 2017

To All Prospective Bidders:

The Southern Humboldt Unified School District (District) herewith issues Addendum No. 1 to the above-referenced solicitation. This Addendum shall be made part of the Contract Documents and the bidder shall acknowledge receipt thereof on the Bid Proposal Form. Except as specifically modified by this document, all other terms and conditions remain in full force and effect.

1. In the Notice Inviting Bids, page 4, section 2:

The RCEA website shall be revised to: <http://www.redwoodenergy.org/index.php/services/bid-opportunities>

2. Appendix A is replaced in its entirety with a revised Appendix A, attached to this addendum.

Notes/comments on changes to Appendix 2, Table 1:

- Quantities and totals have been updated.
- Area F1: Bathroom was added.
- Area C1: Storage by Boiler was removed.
- Ballast Type was changed from Normal Power Output Ballast to also indicate the number of lamps driven by the ballast.

Notes/comments on changes to Appendix 2, Table 2:

- B001: Head Start Building was removed from the scope.
- Quantities and totals were updated.

Notes/comments on changes to Appendix 2, Table 3 and Table 4:

- Impact cages were added to the proposed fixture.

Notes/comments on changes to Appendix 2, Table 5:

- Quantities and totals were updated.
- 20W Canopy fixtures by office were changed to 10W.
- Fixtures already upgraded to LED were removed from scope.

3. Appendix B is replaced in its entirety with a revised Appendix B, attached to this addendum.

Notes/comments on changes to Appendix B:

- Quantities were updated.
- Fixture recommendations were updated with fixtures that meet DLC Technical Requirements 4.0+.

4. Appendix C is replaced in its entirety with a revised Appendix C, attached to this addendum.

Notes/comments on changes to Appendix C:

- Exterior fixtures were added to the Agnes Johnson School map.
- Interior areas included in the scope of work were highlighted on the Redway School map.

APPENDICES

Appendix A – Itemized Scope of Work

Retrofit existing fluorescent fixtures with new tubular LED T8 lamps and compatible electronic ballasts:

Table 1. Agnes Johnson School Linear Fluorescent Lighting

Area	Existing						Proposed	
	Fixture Type	Qty of Fixtures	Lamps per Fixt	Qty of Ballasts	Qty of Lamps	Lamp Type	Lamp Type	Ballast/Fixture Type
C: Boiler Room	Strip	2	2	2	4	40W 4' T12	12W 4' LED T8 5000K	2-Lamp NPO Ballast
D: Office 2	8' Wrap	2	4	4	8	40W 4' T12	12W 4' LED T8 5000K	4-Lamp NPO Ballast
E: Office 1	4' Wrap	1	2	1	2	40W 4' T12	12W 4' LED T8 5000K	New 4' Fluorescent Wrap Fixture
F: Front (Main) Office	4' Wrap	2	4	4	8	40W 4' T12	12W 4' LED T8 5000K	4-Lamp NPO Ballast
F1: Bathroom	2' Wrap	1	1	1	1	17W 2' T8	7W 2' LED T8 5000K	2-Lamp NPO Ballast (2' Lamps)
G: Computer Lab & Library Portable	Troffer	17	2	17	32	40W 4' T12	12W 4' LED T8 5000K	2-Lamp NPO Ballast
H: Portable Room 8	Troffer	8	2	8	16	40W 4' T12	12W 4' LED T8 5000K	2-Lamp NPO Ballast
H1: Room 8 Side Office	Troffer	2	4	4	8	40W 4' T12	12W 4' LED T8 5000K	4-Lamp NPO Ballast
H2: Room 8 Side Bay	Troffer	2	2	2	4	40W 4' T12	12W 4' LED T8 5000K	2-Lamp NPO Ballast
J: Custodial Storage	Strip	1	1	1	1	40W 4' T12	12W 4' LED T8 5000K	1-Lamp NPO Ballast
K: Boy's Restroom	8' Wrap	2	4	2	4	40W 4' T12	12W 4' LED T8 5000K	2-Lamp NPO Ballast
L: Girl's Restroom	8' Wrap	2	4	2	4	40W 4' T12	12W 4' LED T8 5000K	2-Lamp NPO Ballast
M: Room 6	Box	8	4	16	32	40W 4' T12	12W 4' LED T8 5000K	4-Lamp NPO Ballast
N: Room 5	Box	8	4	16	32	40W 4' T12	12W 4' LED T8 5000K	4-Lamp NPO Ballast
O: Room 4	Box	8	4	16	32	40W 4' T12	12W 4' LED T8 5000K	4-Lamp NPO Ballast

Area	Existing					Proposed		
	Fixture Type	Qty of Fixtures	Lamps per Fixt	Qty of Ballasts	Qty of Lamps	Lamp Type	Lamp Type	Ballast/Fixture Type
P: Room 3	Box	8	4	16	32	40W 4' T12	12W 4' LED T8 5000K	4-Lamp NPO Ballast
Q: Room 2	Box	8	4	16	32	40W 4' T12	12W 4' LED T8 5000K	4-Lamp NPO Ballast
R: Room 1	Box	8	4	16	32	40W 4' T12	12W 4' LED T8 5000K	4-Lamp NPO Ballast
	Totals	90	56	144	284			

Table 2. Redway Linear Fluorescent Fixtures

Building	Area Description	Existing					Proposed		
		Qty of Fixtures	Lamps per Fixture	Qty of Ballasts	Qty of Lamps	Lamp Type	Lamp Type	Ballast Type	
B001	Break Room	1	4	1	4	32W 4' T8	12W 4' LED T8 5000K	4-Lamp NPO Ballast	
B001	Office/Basement	1	4	1	4	32W 4' T8	12W 4' LED T8 5000K	4-Lamp NPO Ballast	
B001	Storage/Basement	5	4	5	20	32W 4' T8	12W 4' LED T8 5000K	4-Lamp NPO Ballast	
B001	Kitchen	4	3	4	12	32W 4' T8	12W 4' LED T8 5000K	3-Lamp NPO Ballast	
B001	Performance Stage	6	4	6	24	34W 4' T8	12W 4' LED T8 5000K	4-Lamp NPO Ballast	
B006	Hallway	14	2	14	28	17W 2' T8	7W 2' LED T8 5000K	2-Lamp NPO Ballast	
B006	Psychologist	2	3	2	6	32W 4' T8	12W 4' LED T8 5000K	3-Lamp NPO Ballast	
B006	Speech	2	3	2	6	32W 4' T8	12W 4' LED T8 5000K	3-Lamp NPO Ballast	
B006	Special Ed	7	2	7	14	32W 4' T8	12W 4' LED T8 5000K	2-Lamp NPO Ballast	
B006	Occupational Therapy	2	3	2	6	32W 4' T8	12W 4' LED T8 5000K	3-Lamp NPO Ballast	
B006	English Language	2	3	2	6	32W 4' T8	12W 4' LED T8 5000K	3-Lamp NPO Ballast	
B006	Unisex Restroom	1	2	1	2	32W 4' T8	12W 4' LED T8 5000K	2-Lamp NPO Ballast	
B006	Janitor	1	1	1	1	32W 4' T8	12W 4' LED T8 5000K	1-Lamp NPO Ballast	
B006	Girls RR	1	2	1	2	32W 4' T8	12W 4' LED T8 5000K	2-Lamp NPO Ballast	
B006	Boys RR	1	2	1	2	32W 4' T8	12W 4' LED T8 5000K	2-Lamp NPO Ballast	
B006	SDC-1	18	2	18	36	32W 4' T8	12W 4' LED T8 5000K	2-Lamp NPO Ballast	

Building	Area Description	Existing					Proposed		
		Qty of Fixtures	Lamps per Fixture	Qty of Ballasts	Qty of Lamps	Lamp Type	Lamp Type	Ballast Type	
B006	Resource	8	2	8	16	32W 4' T8	12W 4' LED T8 5000K	2-Lamp NPO Ballast	
B007	Office	8	4	8	32	34W 4' T12	12W 4' LED T8 5000K	4-Lamp NPO Ballast	
B007	Closet	1	4	1	4	34W 4' T12	12W 4' LED T8 5000K	4-Lamp NPO Ballast	
B007	Restroom	1	4	1	4	34W 4' T12	12W 4' LED T8 5000K	4-Lamp NPO Ballast	
B007	Office	2	4	2	8	34W 4' T12	12W 4' LED T8 5000K	4-Lamp NPO Ballast	
B007	Conference Room	4	4	4	16	34W 4' T12	12W 4' LED T8 5000K	4-Lamp NPO Ballast	
B007	Quiet Room	2	4	2	8	34W 4' T12	12W 4' LED T8 5000K	4-Lamp NPO Ballast	
B008	Classroom	10	4	10	40	34W 4' T12	12W 4' LED T8 5000K	4-Lamp NPO Ballast	
B008	Band Locker	2	4	2	8	34W 4' T12	12W 4' LED T8 5000K	4-Lamp NPO Ballast	
B009	Classroom	12	4	12	48	34W 4' T12	12W 4' LED T8 5000K	4-Lamp NPO Ballast	
B010	Classroom	12	4	12	48	34W 4' T12	12W 4' LED T8 5000K	4-Lamp NPO Ballast	
Totals		130	86	130	405				

Replace Existing HID high bay fixtures with new LED high bay fixtures:

Table 3. Agnes Johnson High Bay Fixtures

Area	Existing				Proposed	
	Fixture Type	Qty of Fixtures	Fixture Description	Mounting	Fixture Type	Accessories
A: Gym/Cafeteria	High Bay	9	400W Metal Halide	Monopoint suspended	160W LED High Bay 5000K	Impact Cages

Table 4. Redway High bay Fixtures

Building	Area	Existing				Proposed	
		Fixture Type	Qty of Fixtures	Fixture Description	Mounting	Fixture Type	Accessories
B001	Gym/Cafeteria	High Bay	1	250W Metal Halide	Monopoint suspended	160W LED High Bay 5000K	Impact Cages
B001	Gym/Cafeteria	High Bay	11	400W Metal Halide	Monopoint suspended	160W LED High Bay 5000K	Impact Cages

Replace existing exterior fixtures with new LED fixtures:

Table 5. Agnes Johnson Exterior Fixtures. Also see Map in Appendix C.

Location	Fixture Type	Existing					Proposed	
		Qty of Fixtures	Fixture Description	Mounting	Controls	Height	Fixture Type	Sensor
Outside Office	Canopy	3	2-Lamp 14W CFL	Surface – Ceiling	Time Clock	10	10W LED Canopy 5000K	None
Outside classrooms	Strip	7	1-Lamp 40W 4’ T12	Surface – Ceiling	Time Clock	10	20W LED Canopy 5000K	
Cafeteria corner	Security	1	2-Lamp CFL	Surface- Wall	Motion Sensor	10	RAB 12W Bullet Flood	Motion Sensor
Basketball courts	Streetlight	1	175W Mercury Vapor	Pole – Tenon	Unknown	20	24-29W LED Cobrahead Streetlight 5000K, Type V Distribution Pattern	Photocell
Portables	Wallpack	2	26W CFL	Surface – Wall	Switch	9	20W LED Wallpack 5000K	Photocell
Cafeteria	Wallpack	1	35W HPS	Surface – Wall	Time Clock	9	20W LED Wallpack 5000K	Photocell
Cafeteria	Wallpack	1	45W Incandescent	Surface – Wall	Time Clock	9	20W LED Wallpack 5000K	Photocell
	Total	16						

Add occupancy sensors to restrooms and classrooms:

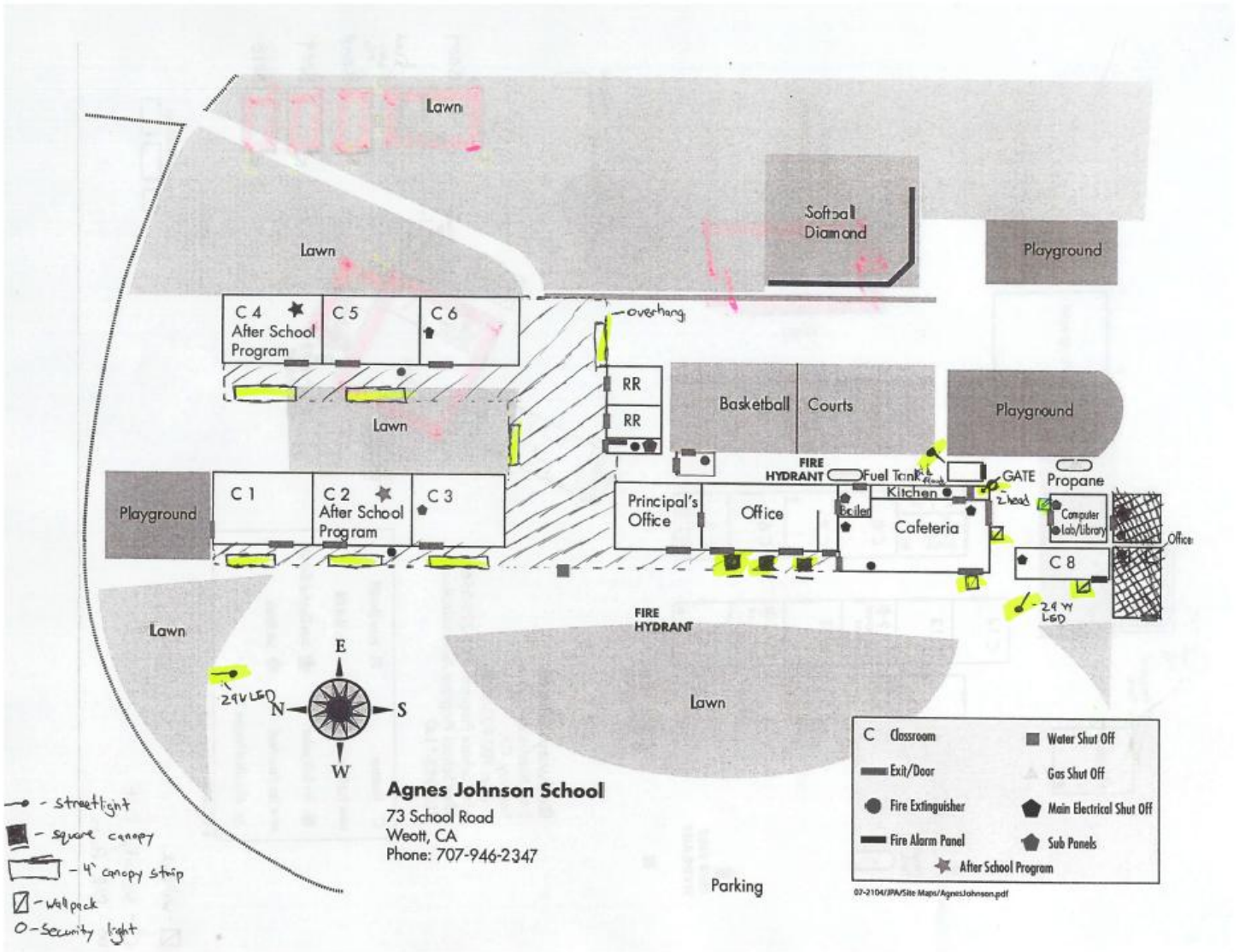
Table 6. Rooms needing occupancy sensors

Room	Qty of Controls	Control Type	Mounting Location
Girls and Boys Bathrooms	2	Dual technology occupancy sensor	Ceiling
Classrooms 1-6	6	Dual technology occupancy sensor	Wall, near corner

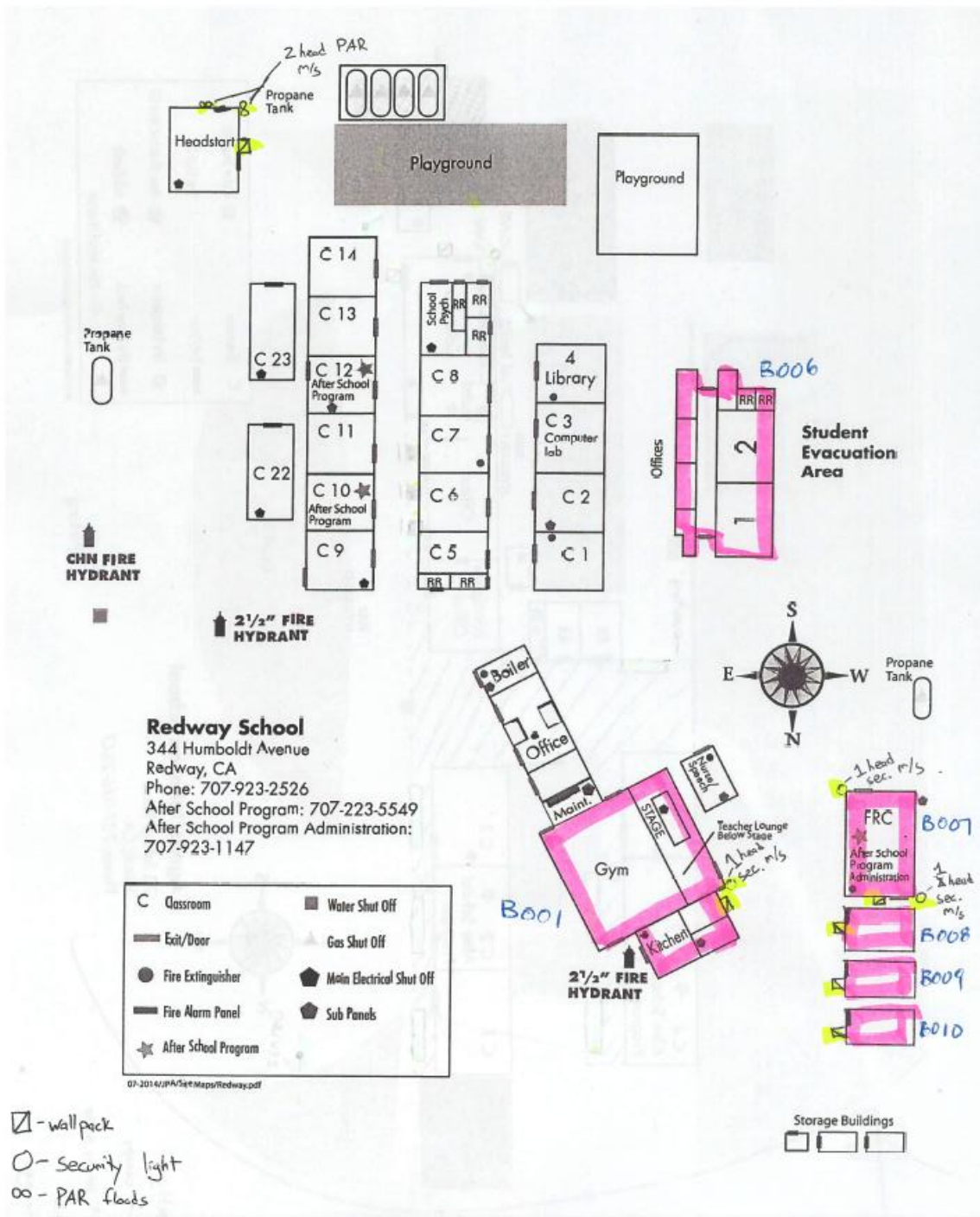
Appendix B – Lighting Equipment List

Type	Equivalent Fixture	Qty
12W 4' LED T8 5000K	Philips 12W Instantfit 12T8/48-5000 or 10W Instantfit 10T8/48-5000	638
7W 2' LED T8 5000K	Philips 7W Instantfit 7T8LED/24-5000	29
1-Lamp NPO Ballast	Philips Advance ICN-1P32-N-35I	2
2-Lamp NPO Ballast	Philips Advance ICN-2P32-N-35I	83
3-Lamp NPO Ballast	Philips Advance ICN-3P32-N-35I	12
4-Lamp NPO Ballast	Philips Advance ICN-4P32-N-35I	175
10W LED Canopy 5000K	RAB VANLED10	3
20W LED Canopy 5000K	RAB VANLED20	7
29W LED Pole Mount Fixture 5000K	Cree XSP 29W	1
20W LED Wallpack 5000K	Atlas WSPS20	4
160W LED High Bay 5000K	Cree CXB-A-UV-M-50K-8-UL-10V with CXB16P16 Reflector and WG-AP impact cages	21
16.5W U LED T8 5000K	Philips 16.5W InstantFit 16.5T8/22.5-5000	2
12W Bullet Flood (double head)	RAB 2X12 BULLET with motion sensor	1
Dual Technology Ceiling Mount Occupancy Sensor and power pack	Leviton O2C05-MDW	2
Dual Technology Wall Mount Occupancy Sensor and power pack	Leviton OSW12-M0W	6
4' Fluorescent Wrap Fixture	Lithonia LB-2-32-MVOLT	1

Appendix C – Agnes Johnson School Site map



Appendix D – Redway School Site map



Exterior fixtures at Redway are not part of the scope of work. Only the highlighted (pink) buildings are included in the interior lighting retrofit.