

**ADDENDUM TO INVITATION FOR BIDS**  
**Bridgeville Elementary School District**  
**Proposition 39**  
**Heat Pump Installation, Phase II**  
**Bid No. 17-027**

**Addendum #1**  
**November 17, 2017**

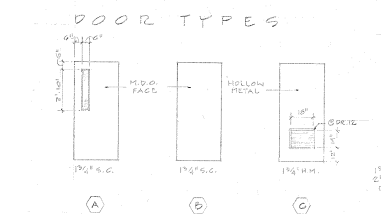
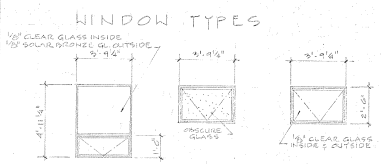
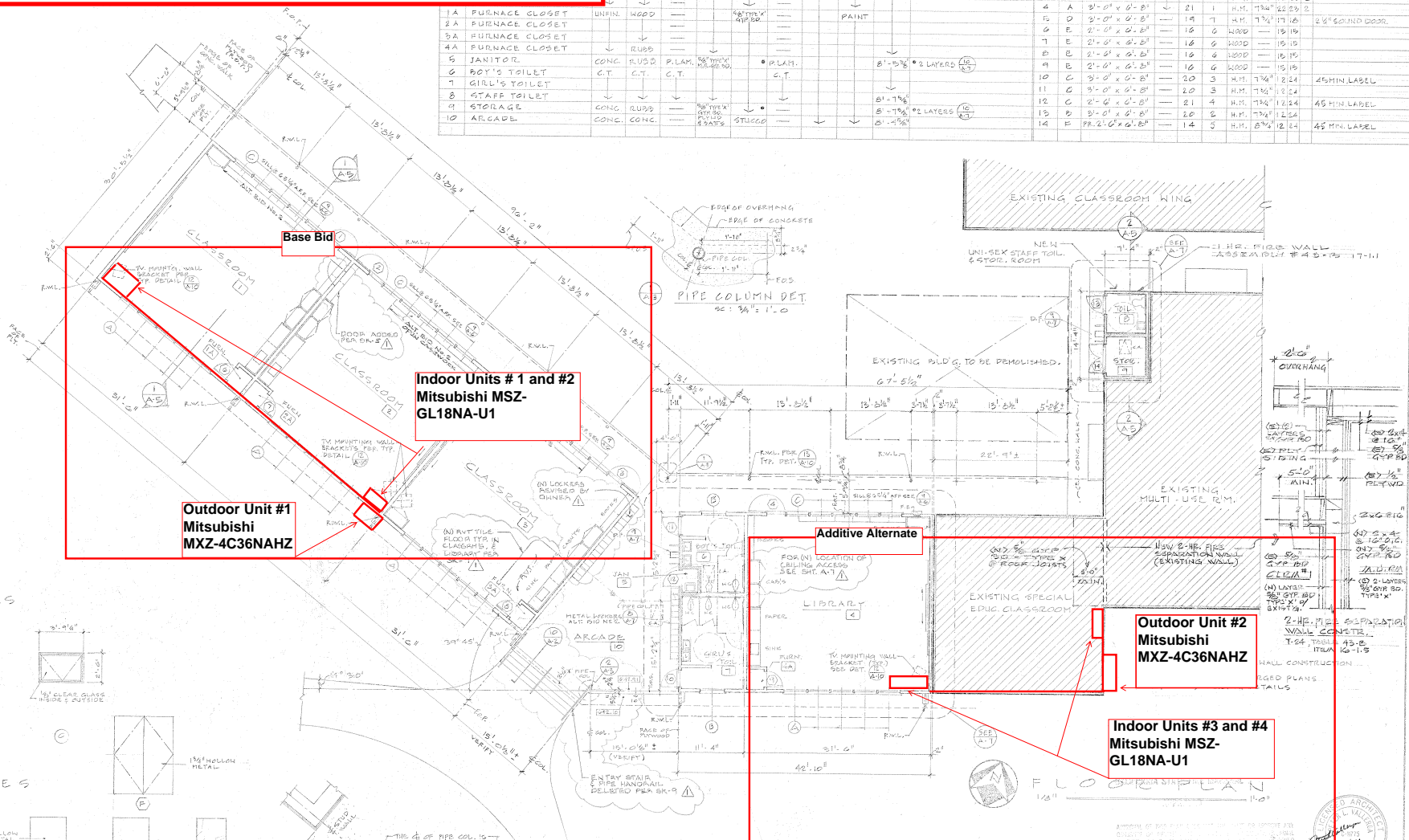
**To All Prospective Bidders:**

The Bridgeville Elementary School District (District) herewith issues Addendum No. 1 to the above-referenced solicitation. This Addendum shall be made part of the Contract Documents and the bidder shall acknowledge receipt thereof on the Bid Proposal Form. Except as specifically modified by this document, all other terms and conditions remain in full force and effect.

1. Bidders are to provide and install a chase or raceway to cover and protect refrigerant lines installed along the building exterior.
2. The location of the indoor mounted units has been revised. See updated Appendix 3 for new locations.
3. All bird nesting material below eaves will be removed and cleaned by District staff.
4. Exterior condensate lines shall be copper and securely affixed to the building exterior.
5. Temperature controls for both the base bid and alternate bid (under Scope of Work, items 1.f and 2.f) shall be Mitsubishi MHK1 wireless remote control.
6. A bid surety (e.g. bid bond or cashier's check) in an amount equal to ten percent of the combined base bid and alternate bid amounts, is required to be submitted with the bid proposal.
7. Performance and payment bonds (as described in Section 10 of the General Conditions to the Contract) will only be required on this project if the bidder's combined base and alternate bid amount exceeds \$25,000.
8. The required vandal proof caging around the outdoor units shall be primed and of similar construction and appearance to the cage around the existing outdoor unit serving classroom 6, meet minimum clearance requirements as required by the heat pump manufacturer, be properly mounted to the concrete pad and/or structural framing as appropriate, and shall allow access through a lockable side panel on hinges for servicing of the outdoor unit.

**Revised Appendix 3:  
Base Bid and Additive Alternate Site Plan**

MATERIALS SCHEDULE										DOOR SCHEDULE									
NO.	DESCRIPTION	UNIT	QTY	UNIT PRICE	TOTAL PRICE	FINISHES	CEILING	HEIGHT	REMARKS	NO.	TYPE	SIZE	GLASS	FRAMES	HT.	WT.	REMARKS		
1A	FURNACE CLOSET	UNFIN.	WOOD							1	A	3'-0" x 6'-0"	1/8"	21	1	H.M.	7 1/2"	22 1/2"	
2A	FURNACE CLOSET	UNFIN.	WOOD							2	A	3'-0" x 6'-0"	1/8"	21	1	H.M.	7 1/2"	22 1/2"	
3A	FURNACE CLOSET	UNFIN.	WOOD							3	A	3'-0" x 6'-0"	1/8"	21	1	H.M.	7 1/2"	22 1/2"	
4A	FURNACE CLOSET	UNFIN.	WOOD							4	A	3'-0" x 6'-0"	1/8"	21	1	H.M.	7 1/2"	22 1/2"	
5	JANITOR	CONC.	RUBB.							5	E	2'-0" x 6'-0"		18	6	WOOD		15 1/2"	
6	BOY'S TOILET	CONC.	RUBB.							6	E	2'-0" x 6'-0"		18	6	WOOD		15 1/2"	
7	GIRL'S TOILET	CONC.	RUBB.							7	E	2'-0" x 6'-0"		18	6	WOOD		15 1/2"	
8	STAFF TOILET	CONC.	RUBB.							8	E	2'-0" x 6'-0"		18	6	WOOD		15 1/2"	
9	STORAGE	CONC.	RUBB.							9	E	2'-0" x 6'-0"		18	6	WOOD		15 1/2"	
10	ARCADÉ	CONC.	CONC.							10	C	3'-0" x 6'-0"		20	3	H.M.	7 1/2"	24"	
										11	C	2'-0" x 6'-0"		20	3	H.M.	7 1/2"	24"	
										12	C	2'-0" x 6'-0"		21	4	H.M.	7 1/2"	24"	
										13	C	2'-0" x 6'-0"		20	5	H.M.	7 1/2"	24"	
										14	F	2'-0" x 6'-0"		14	5	H.M.	8 1/2"	24"	



STATE FIRE MARSHAL: [Signature]

REVISION B-22-94

IDENTIFICATION STAMP: JUN 17 1992

569 AS 200172

FLOOR PLAN: LIBRARY & CLASSROOM ADDITIONS, BRIDGEVILLE ELEM. SCHOOL, BRIDGEVILLE SCHOOL DISTRICT, BRIDGEVILLE, HUMBOLDT CO., CALIFORNIA

GERALD D. MATSON, ARCHITECTS, INC. 3234 T ST. • EUREKA, CALIFORNIA • PH 424-9930

APPROVED BY: [Signature]

DATE: APR 1, 1991

SCALE: A-3