

PG&E Humboldt WaveConnect™ Pilot Project

Project Description

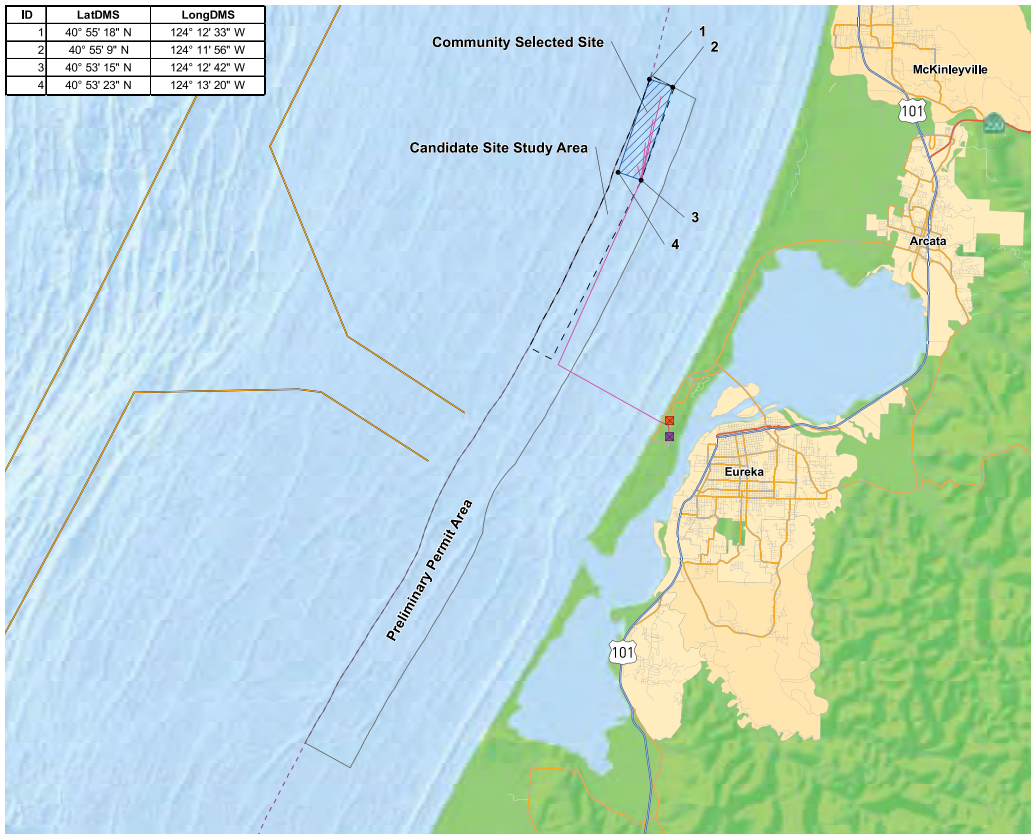
In March 2008, PG&E received a preliminary permit from the Federal Energy Regulatory Commission (FERC) to study the feasibility of siting a wave energy pilot project off the coast of Humboldt County. The preliminary permit allows PG&E to study the offshore environment to determine whether the location is appropriate for a small wave energy test facility. After conducting these initial studies, PG&E plans to apply to FERC for a pilot project license that would allow PG&E to develop a **five megawatt (5 MW), five-year demonstration wave energy project**.

Project Benefits

Wave energy has the potential to become a major contributor to California's renewable energy supply. Studying the potential of ocean wave energy in Humboldt County will provide the renewable energy industry with important insight on how best to harness the approximately 5,500 MW of potential **renewable, carbon-free wave energy** that exists off the California coastline¹. In addition, as part of this wave energy pilot project PG&E is engaging local partners in environmental and engineering work and other aspects of the project.

Preliminary Permit Study Area

ID	LatDMS	LongDMS
1	40° 55' 18" N	124° 12' 33" W
2	40° 55' 9" N	124° 11' 56" W
3	40° 53' 19" N	124° 12' 42" W
4	40° 53' 23" N	124° 13' 20" W



HUMBOLDT WAVECONNECT
WAVECONNECT PROJECT
HUMBOLDT COUNTY, CALIFORNIA

The preliminary permit allows PG&E to conduct studies only. It does not allow for construction, exclusion, or any physical disturbance. If the project is permitted for construction at a later date, the project footprint would be significantly smaller than this preliminary permit study area.

- LEGEND**
- Fairhaven Substation
 - Freshwater Mill Substation
 - Preferred Cable Route (5 cables)
 - Tow Boat Lanes
 - - - 3 Nautical Mile
 - ▭ Community Selected Site
 - ▭ Candidate Site Study Area
 - ▭ Preliminary Permit Area



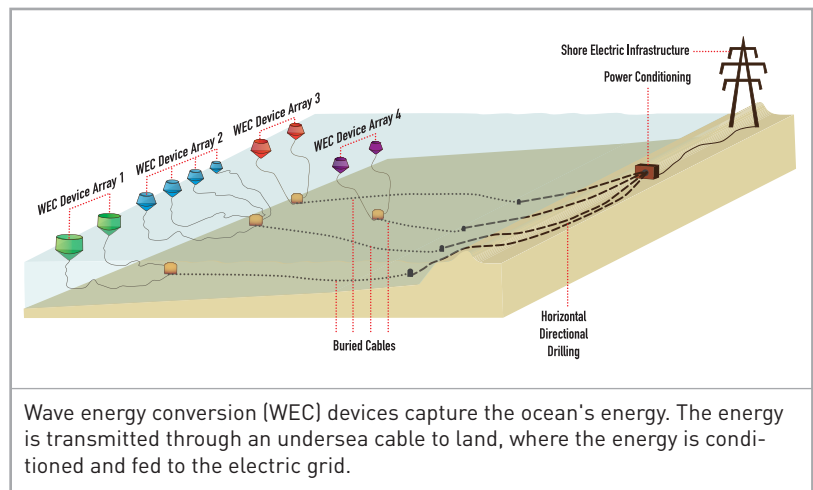
PG&E Humboldt WaveConnect™ Pilot Project

Public Involvement

PG&E is committed to **working closely with a broad range of stakeholders** in the Humboldt County area to assure that local interests are understood and addressed, to the extent possible. Central to this effort is the Humboldt Working Group (HWG), a community-selected stakeholder group that meets on a monthly basis to provide community input to PG&E on the WaveConnect Pilot Project and topics related to the FERC pilot project license application. The members of the HWG represent a broad cross-section of interests in the Humboldt area, including: commercial and recreational fishing, surfing, environment, economic development, labor, public-at-large, local public officials, energy, academic, and regulatory and resource agencies. We encourage you to contact us and the HWG members with any comments and/or questions about this project (go to www.pge.com/waveconnect for the HWG member list).

Looking Ahead

With the input from the HWG, PG&E will file a draft and a final application to FERC for a five megawatt (5 MW) pilot project license to construct and operate a wave energy test facility for five years. FERC and federal and state agencies would then review the application to determine whether to grant the pilot project license. Only after receiving the final pilot project license from FERC is PG&E able to begin construction of a wave energy facility (no sooner than 2012). Once the five-year term of project operations expires, FERC envisions the project will be decommissioned and removed from the water. Based on this pilot wave energy project experience, PG&E may be interested in pursuing a larger, commercial project. If so, it would likely be in deeper waters further offshore and entail an entirely separate, new licensing and public engagement process.



WaveConnect Website

For regular updates, check out the WaveConnect website at www.pge.com/waveconnect where you can follow the HWG conversation through meeting presentations and summaries. You can also find information about the Humboldt WaveConnect pilot project, process, wave energy technologies, and additional ways to get involved.

Contact

Email: waveconnect@pge.com
Phone: 1-877-743-6436

Mailing Address: William Toman
Senior Project Manager
Renewable Resource Development
Pacific Gas & Electric Company
77 Beale Street
Mailstop 5BQ
San Francisco, CA 94105

