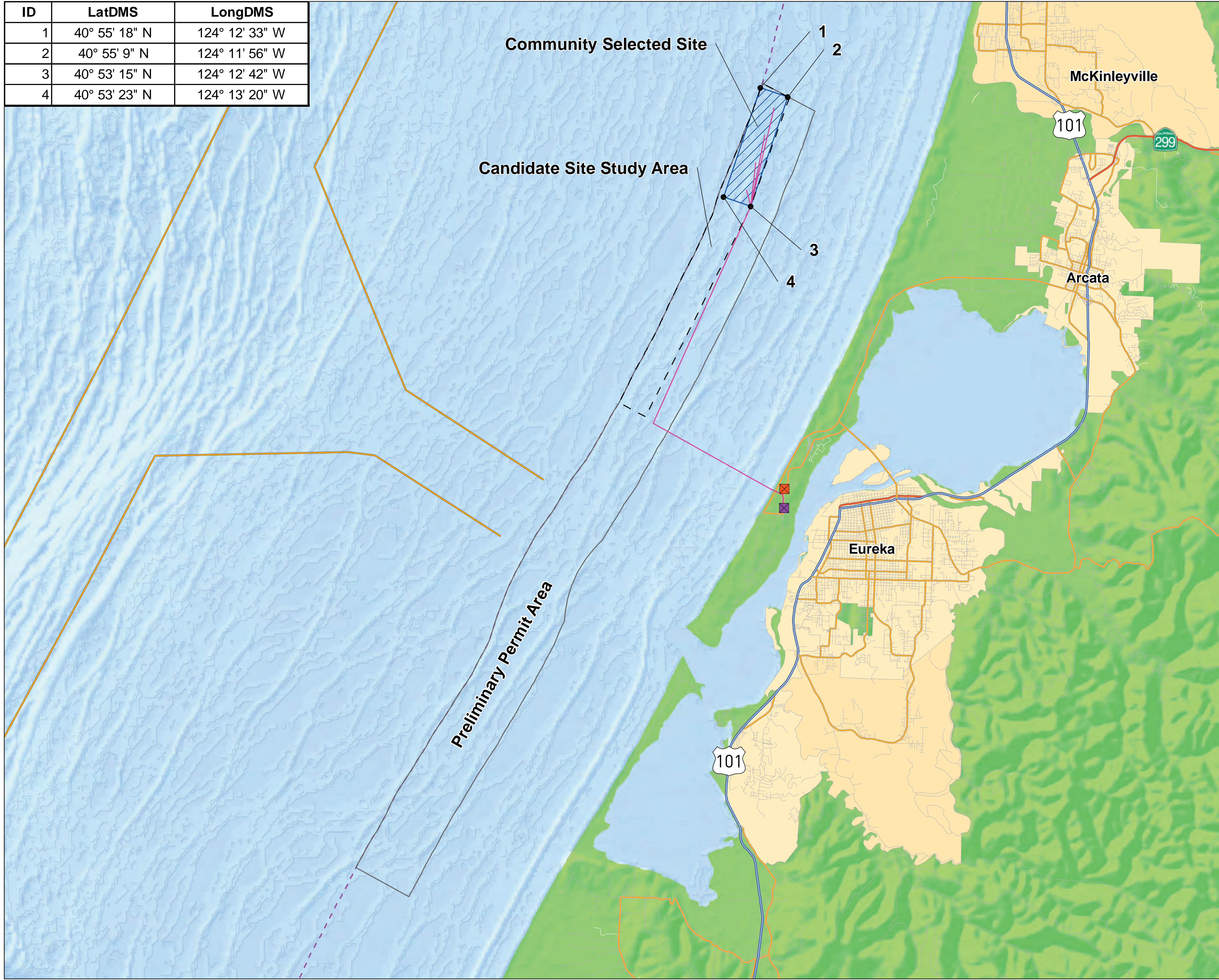


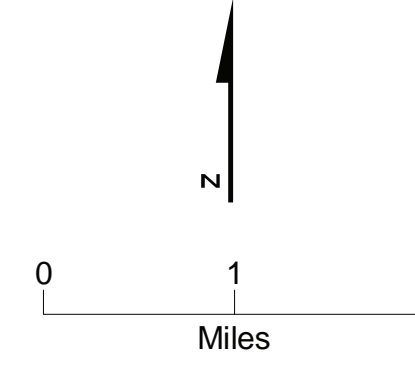
Humboldt WaveConnect™ Pilot Project Offshore Site

HUMBOLDT WAVECONNECT
 WAVECONNECT PROJECT
 HUMBOLDT COUNTY, CALIFORNIA

ID	LatDMS	LongDMS
1	40° 55' 18" N	124° 12' 33" W
2	40° 55' 9" N	124° 11' 56" W
3	40° 53' 15" N	124° 12' 42" W
4	40° 53' 23" N	124° 13' 20" W



The preliminary permit allows PG&E to conduct studies only. It does not allow for construction, exclusion, or any physical disturbance. If the project is permitted for construction at a later date, the project footprint would be significantly smaller than this preliminary permit study area.



- LEGEND**
- Fairhaven Substation
 - Freshwater Mill Substation
 - Preferred Cable Route (5 cables)
 - Tow Boat Lanes
 - - - 3 Nautical Mile
 - ▨ Community Selected Site
 - - - Candidate Site Study Area
 - ▭ Preliminary Permit Area